



# Project Update December 2021

December 2021 marks the end of the 2nd year of a 3-year build program for the project. 2021 was a year of great progress with the site transforming as the waste bunker was completed 8m below the surface and the boiler structure reached 30m into the Rockingham skyline. We are proud to share this project update and thank all our project partners for their efforts during the year.



## Construction Update



### Civil works:

- Waste bunker complete
- Inground services complete
- Stormwater management system complete



### Structural:

- Modular cubes transported and installed on site
- Support frames for boiler completed
- Walkways and access platforms installed



### Moving Grate:

- Moving grate for combustion complete
- Waste feed hopper being installed
- Ash extractors installed



### **Air Quality Control System:**

- Baghouse installations underway
- First segment of stack installed
- Continuous emissions monitoring ports installed



### **Electrical:**

- Air Cooled Condenser (ACC) installed
- Electrical switchyard completed
- Steam turbine delivered to site



### **Support Buildings:**

- Maintenance Workshop built and fitted out
- Admin education centre under construction off site



### **Incinerator Bottom Ash Treatment Plant:**

- German packaged IBAA process plant delivered to site
- IBAA building pad prepared
- IBA conveyor system from plant being constructed





## Project Partner Update



### Western Power

Western Power completed all grid connection works in 2021. This included the installation of a substation on site, erection of transmission poles and wires, and upgrade of substations in the Kwinana area.



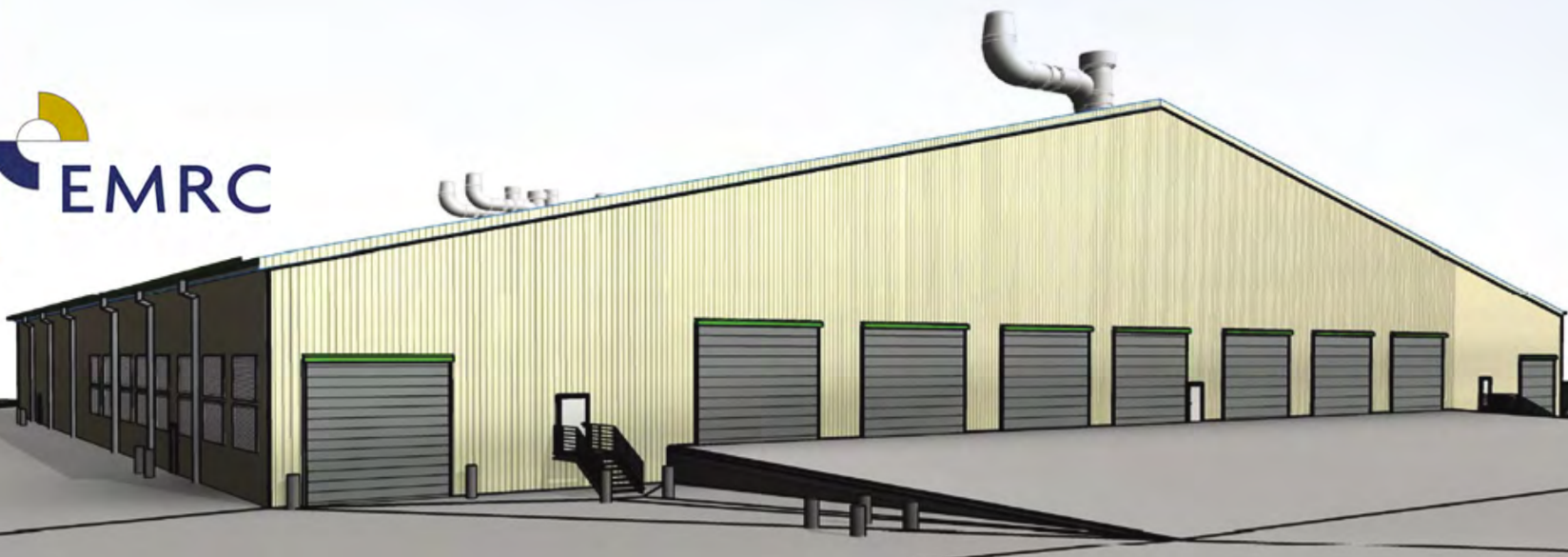
### ARENA

An independent Lifecycle Assessment Report was conducted as part of our commitment to knowledge sharing with the Australian Renewable Energy Agency. As councils adopt net zero emissions policies, waste to energy can make a significant contribution to reducing carbon emissions from waste management.

**387,104 tonnes CO<sub>2</sub>-e**

The annual CO<sub>2</sub>-e savings achieved by East Rockingham Waste to Energy every year of operation.





## OPENING AUGUST 2022

### Hazelmere Resource Recovery Park – Waste Transfer Station

**Overview:** Centrally located between south and north of the Swan River and due for completion in August 2022, the EMRC’s Hazelmere Resource Recovery Park Waste Transfer Station will facilitate consolidation and bulk transportation of Municipal Solid Waste (MSW) and Commercial & Industrial (C&I) waste to the East Rockingham Resource Recovery Facility Waste to Energy from the [north-eastern] region of metro Perth.

**Capacity:** With a capacity of 230,000 tonnes of materials per annum, of which 40,000 tonnes is FOGO, the Hazelmere Transfer Station will serve the needs of EMRC’s residents for many years to come.

**What happens to the waste delivered to the station?** MSW and C&I waste destined for energy recovery will be consolidated and bulk transported to East Rockingham WTE. FOGO materials will be bulk transported to EMRC’s Red Hill Waste Management Facility for recycling into compost.



Following a competitive tender for waste to energy services, the WMRC awarded the contract to East Rockingham WTE in 2021. The WMRC is made up of councils from Claremont, Subiaco, Cottesloe, Peppermint Grove and Mosman Park. We welcome the WMRC to the project and look forward to delivering the benefits of waste to energy to their residents for many years to come.



East Rockingham WTE has long-term customer commitments for over 64% of plant capacity and we’re in active discussions with numerous others. If you’d like to find out more about a cost-effective alternative to landfill for your residual waste, please contact me at [Jason.Pugh@erwte.com.au](mailto:Jason.Pugh@erwte.com.au)



## Plant Manager Profile – Iain Priest

2022 will mark the beginning of operations at the East Rockingham WtE project. The plant will be operated by EROC Energy (a JV between Suez and HZI). Iain Priest arrived in January from the UK to head up the O&M company in the role of Plant Manager. Iain has extensive experience in the UK with major waste-to-energy operators, Viridor and FCC.

Iain has started recruiting staff for the operations and maintenance team and will shortly begin the online training modules designed by HZI. He has also held training seminars at South Metro TAFE to attract young West Australian's into a career in waste to energy. Iain is a wonderful addition to the project team and is a favourite with our Local Government site tours.



**The owners of East Rockingham Waste to Energy wish you all a safe and happy holiday period.**

**John Laing**  
making infrastructure happen

  
**Masdar Tribe Australia**

 **acciona**

 **Hitachi Zosen  
INOVA**

This Project received funding from the ARENA Advancing Renewables Program.