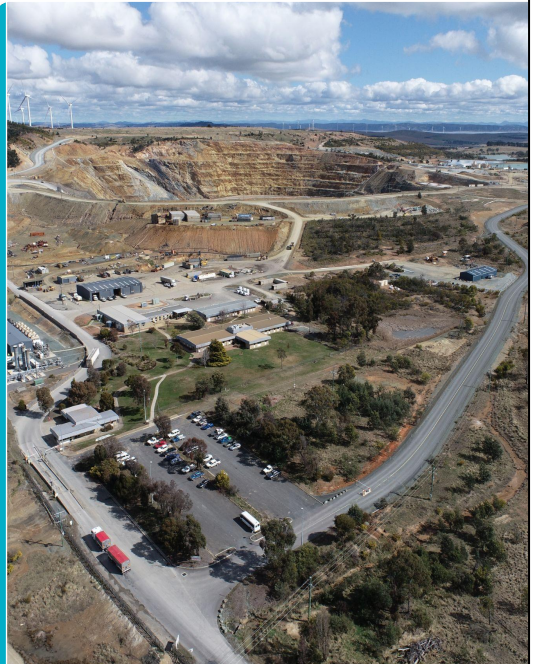




Woodlawn Eco-Precinct Community Liaison Committee Meeting

10th August 2023

*NSW Woodlawn Eco-Precinct
619 Collector Road / Tarago / NSW 2580 Australia
off.: +61 2 8588 1360
www.veolia.com/anz*



Welcome

Veolia acknowledges Ngunnawal people as the traditional custodians of the lands and waters in which we live and work and their continuing connection to land, water and community. We pay respects to their Elders past, present and emerging.

Welcome and thank you. Effective community consultation is a participation process that underpins genuine community development. The purpose of the Woodlawn Community Liaison Committee is to help us better understand what the community values and keep us informed of issues that the community finds important so we can provide feedback and continually improve our processes.



**MEETING
AGENDA**

Item	Topic
1	<i>Introductions / Welcome</i>
2	<i>ARC Project Update</i>
3	<i>Present/Apologies</i>
4	<i>Overview of the CLC charter and agreement on commitments</i>
5	<i>Woodlawn Eco-Precinct Operational Update</i> <ol style="list-style-type: none"><i>1. Tonnage</i><i>2. Woodlawn Bioreactor & Leachate Treatment Plant</i><i>3. Water Management</i><i>4. Leachate Management</i><i>5. Bioenergy & Mechanical Biological Treatment Plant</i><i>6. Odour Management</i><i>7. Container Management</i><i>8. Catchment rehabilitation</i>
6	<i>Environmental Compliance Update</i> <ol style="list-style-type: none"><i>1. General Matters</i><i>2. EPL Variations</i><i>3. Project Approval Modifications</i><i>4. Consultation</i>
7	<i>Community Actions, Q & A</i>
8	<i>Meeting Closed</i>

Looking for a new facilitator. Kym Wake nominated as chairperson.
Meeting opened with an Acknowledgement of Country and CLC members were welcomed to the CLC meeting.
JH explained that the current Facilitator had withdrawn from the CLC and that we will be looking for a replacement.

Introductions / Welcome

ARC Project Update

VEOLIA ARC UPDATE SINCE PUBLIC EXHIBITION

End Dec: Veolia received over 600 responses to submissions

Jan - Feb: Veolia reviewed and categorised the submissions to commence response process.

March - April: Veolia shared an update with the community in the Tarago Times. Additional Govt department submissions were made to Veolia.

May - Aug: Additional studies being undertaken. Veolia continues to seek clarity from some submissions, take on feedback and work on the response to submissions report.

Response to submissions report drafting is in progress.



Kathryn Whitfield (KLW) from Veolia provided an update on the ARC project.

Undertaking additional studies e.g. updating Human Health Risk Assessment, new traffic impact assessment, updating Air Quality Impact Assessment etc

Current timeline for response to submissions and next steps

Timing for a draft response to submissions to be provided to the Department of Planning (DPE) is late Qtr 3 / early Qtr 4 2023. DPE will complete an adequacy review. Following this, the Response to Submissions (RTS) report will become available on the DPE website. DPE then proceeds with preparing its assessment report, and making a recommendation to the Independent Planning Commission (IPC), who is the consent authority for this project.

Once the IPC process commences, there will be a further review of the project documentation, DPE's assessment report and recommendations. There will be a process of engagement by the IPC with government agencies and other stakeholders, and importantly, a public hearing at which community stakeholders will be able to register for, and have the opportunity to present to the Commissioners. The IPC will then proceed with making its determination on the project. This is not likely to be in 2023.

VEOLIA ARC NEXT STEPS



Finalise Response to Submissions Report

Awaiting the remaining additional studies needed to satisfy the issues raised. We want to ensure we are adequately addressing all submissions. We will continue to update the community via the ARC website.

Independent Planning Commission

Once Veolia's Response to Submissions Report is submitted, the department will prepare its assessment report. Making a recommendation to the IPC who is the consent authority for this project.

Once the IPC process commences there will be review of project documentation, DPE's assessment report and there will be a process of engagement by IPC with government agencies and stakeholders.

A public hearing will be held at which the community can present. The IPC will then make its determination on the project.

Contact us

If you have questions, don't hesitate to contact us.

ARC:

Q. When is Veolia planning to submit its response to submissions?

A. Towards end of Q3

Q. Does Veolia consider the bioreactor or the incinerator a more environmentally sustainable solution? Why?.

A. Energy Recovery Facilities (ERFs) are a proven technology to recover energy from waste and reduce landfill use, fossil fuel use and cut emissions of greenhouse gases. In line with the waste hierarchy where we cannot first avoid, reuse or recycle waste, the next most sustainable way to minimise environmental impact is to recover energy. This technology is also in line with the NSW Waste and Sustainable Materials Strategy.

Q. Is it still the case that transmission line will be considered separately?

A. Yes. (Commentary in room on difficulty of the transmission line and potential effects on community, discussion on mechanisms for a deferred commencement consent. Some believe pressure to approve project on Govt if there is a deferred commencement consent. Commentary was made that the community believe Veolia could still build and operate the ARC without approval for energy offtake. KLW said that we would not (and could not) operate the ARC without an energy offtake as this is not in line with the NSW EfW Policy.. .)

Request to add 66kV and 330kV options in RTS.

Q. What alternative solutions did Veolia consider for waste management before proposing the incinerator? Why did Veolia decide the incinerator was better?

A. In line with Government policy and the waste hierarchy Veolia investigated opportunities for the treatment of residual waste. While new to Australia, ERFs are proven and widely used overseas. Veolia operates facilities at all stages in the waste hierarchy - aiming to first avoid/reduce waste, recycle and then recover waste.

Q. Goulburn Mulwaree Council (GMC) sees very little available further accommodation areas between flood and lead contamination. Potential impacts on price. Council developed a small housing strategy for Tarago - limited footprint for expansion. Lots of State Significant Development (SSD) projects in the region - shortage of accommodation. Short term rental accommodation is difficult to find. Wind farms, solar farms, quarries. Queanbeyan Palerang Regional Council (QPRC) also having same conversations around Queanbeyan, Palerang and Braidwood.

A. An initial housing strategy is being developed that will also include the peak scenarios including 300 workers a day during project construction. Further detail will be developed as part of an accommodation plan prepared prior to construction.

Q. What is the comparison between the proposed incinerator greenhouse gas emissions and the bioreactor's current performance?

A. An updated assessment based on average emissions is being conducted as part of the Response to Submissions report and will be included in the updated report.

| Present / Apologies

Apologies: Wayne Baynham and Dr Samantha Johnson

Note: Emma North TADPAI president to be invited to next meeting

CLC Charter

Comment - CLC is a consultative committee not a decision making body.
Request to Veolia to resource up CLC and community engagement.

Veolia Community Liaison Committee

As per slide

Update to Quarterly meeting. Paper pre-reading 1 week in advance. When a facilitator is not present then nominate a chairperson.

Eco-Precinct Operational Update

ECO-PRECINCT OPERATIONAL UPDATE

WOODLAWN BIOREACTOR & WOODLAWN LTP

Bioreactor Landfill

YTD Waste Processed (7 Sep 2022 - 10 August 2023)

- Regional Waste 116,198t - (licence 125,000t)
- Sydney Waste 640,583t - (licence 900,000t)

Mechanical Biological Treatment

YTD Waste Processed (August 2023)

- Sydney Waste 74,636T - (licence 144,000t)
- MWOO to Bioreactor (ADC) 7,448T
- WOO to Tailings Rehabilitation 8,438T
- Ferrous Recovery 240 T



Leachate Treatment Plant

YTD Leachate Treated (10 August 2023)

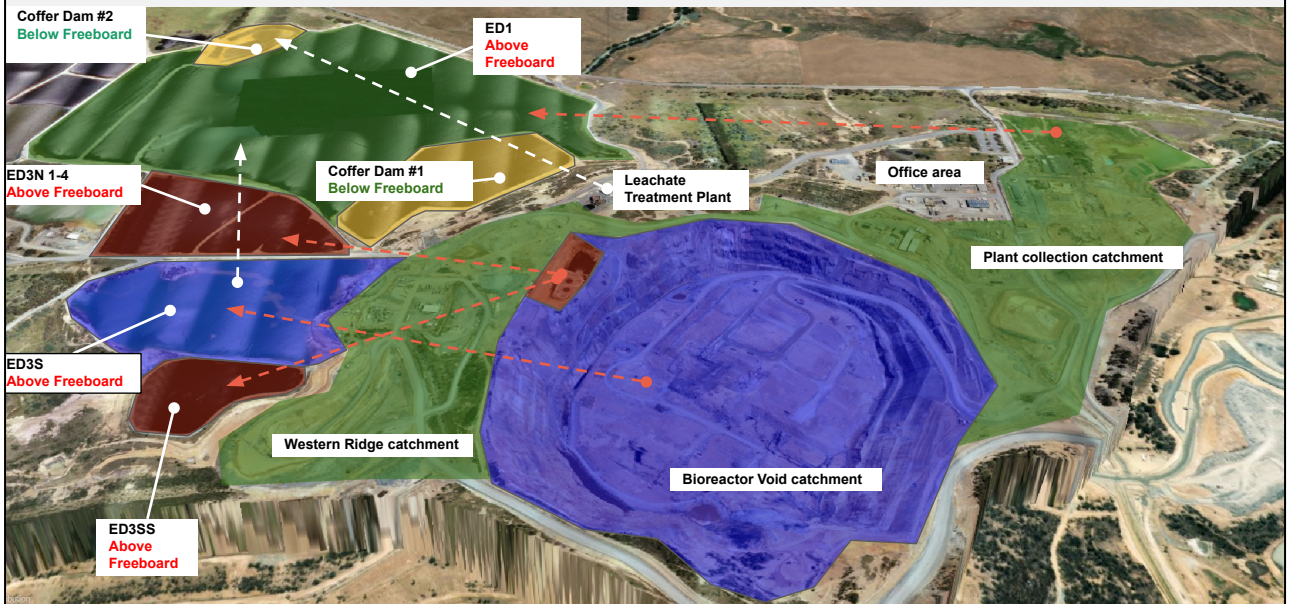
- Current treatment rate of 4.3L/s
- Average treatment rate 4.6/s
- No effluent quality exceedances
- Licence requirement 4L/s

Q. Can you please add reason/explanation of what tonnages mean i.e. what is the importance of key figures. KW said it would be good to have a reason for each slide as to why it is being reported on and what it means to the community.

A. We will put perspective into the next iteration of the slides.

Water Management

Storage status and location (August YTD 2023)



Feedback comment - Can you please flick past this one unless there are any major changes.

A. Yes.


Q. Which coffer dams are in the application process?

A. New Dam 3 is onsite next to ED3SS, MBT dam is south of MBT

Water Management Freeboard Management

Evaporation capacity ED1
once all installed
120 L/sec = 10.4 ML/day
20% = 2.1 ML/day loss

- **ED1 - Over freeboard - remaining capacity to overflow 150 ML**
 - Reported to regulators
 - 60 L/sec mechanical evaporation installed
 - Additional 36 L/s evaporation throughput to install by end of Sep 2023
 - Additional 24 L/s mechanical evaporation system for installation in December 2023
- **ED3N and ED3SS - Over freeboard - remaining capacity to overflow 15 ML**
 - Reported to regulators
 - Currently 49 L/s mechanical evaporation
 - Additional 5 L/s evaporation planned for 2023 (Waiting for pump and parts)
- **ED3S stormwater - Over freeboard - remaining capacity to overflow 24 ML**
 - Reported to regulators
 - Current 4 L/s evaporation throughput
 - Additional 10 L/s evaporation throughput by end of 2023 (Waiting for pump and parts)
- **Coffer Dam #1 - Below freeboard**
 - Currently reducing volumes to carry out repairs to liner
 - 36 L/sec installed mechanical evaporation
- **Coffer Dam #2 (50ML) - Below freeboard (started receiving from LTP since 30th June)**
 - Currently taking all treated leachate - App. 345,000 L/day
 - Current 5 L/s evaporation throughput
 - Additional evaporation planned to install by end of 2023

 Nom de la présentation

* Note: 1 L/s = 86,400 L/day @ 20% evaporation = 17,280 L/day

JH - presented the slide and advised of dams that are currently at or above freeboard due to the high rainfall and the plans to reduce these levels.

Feedback - Needs more picture, otherwise not particularly interesting / skim past it. JH said the next slide has a graphical representation of the storage volumes. We put everything in this time to see what the committee would like to see going forward

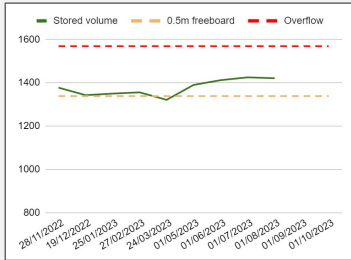
Q. Are the coffer dams lined?

A. Both coffer dams are lined.

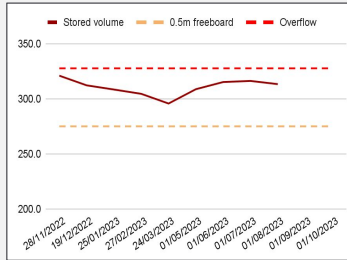
Water Management

Liquid Storage change

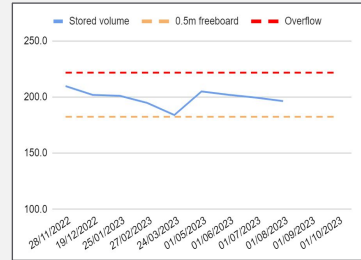
ED1



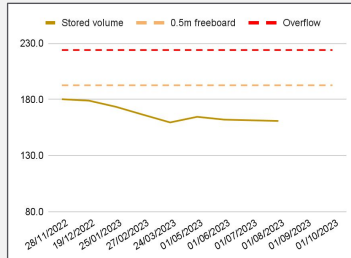
ED3N and ED3SS



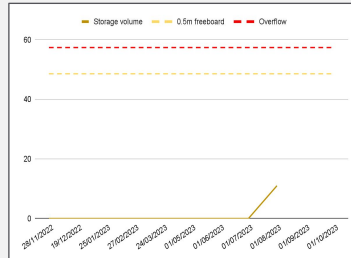
ED3S Stormwater



Coffer dam #1



Coffer dam #2



Nom de la présentation

* Note: Storage volume in ML

ECO-PRECINCT OPERATIONAL UPDATE LEACHATE MANAGEMENT

- Treated Leachate is not being transferred to ED1
- Monitoring of downstream groundwater system continues - no changes to water quality recorded (no TARP trigger)
- Lined Coffer Dam 2 (for treated leachate) - is receiving treated leachate from the leachate treatment plant and has evaporators
- Relining of Coffer Dam 1 embankment area scheduled for September
- Increasing mechanical evaporation



Coffer #2 2023 and start spray discharge for better evaporation

Coffer #1 November 2022



Coffer #1 April 2023



Discussed installing additional evaporators.

Q. Is this planning for future water storage needs?

A. Yes

Q. Who are the approving authorities for new dams?

A. DPE, they take EPA feedback. EPA license variation required to use a new dam.

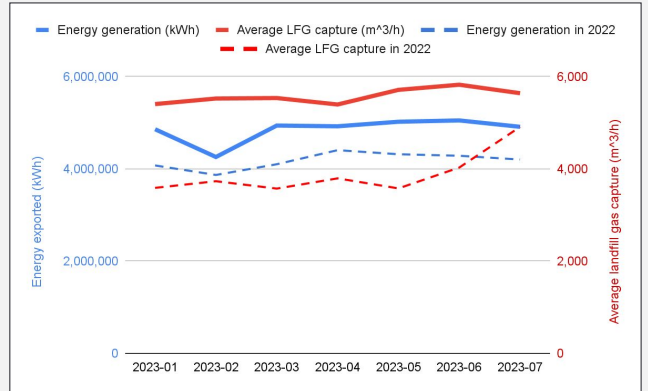
ECO-PRECINCT OPERATIONAL UPDATE

BIO-ENERGY & WOODLAWN MBT PLANT

Bioenergy

2023 Biogas Capture

- Gas collected till July/2023 **28,383,920 m³**
- Increased by **8,597,323 m³** (43%) compared to same time last year
- Energy Generation **33,971 MWh** till July/2023
- Increased by **4,712 MWh** (16%) compared to same time on last year
- In 2023, equivalent to removing 96,074 cars off the road each month



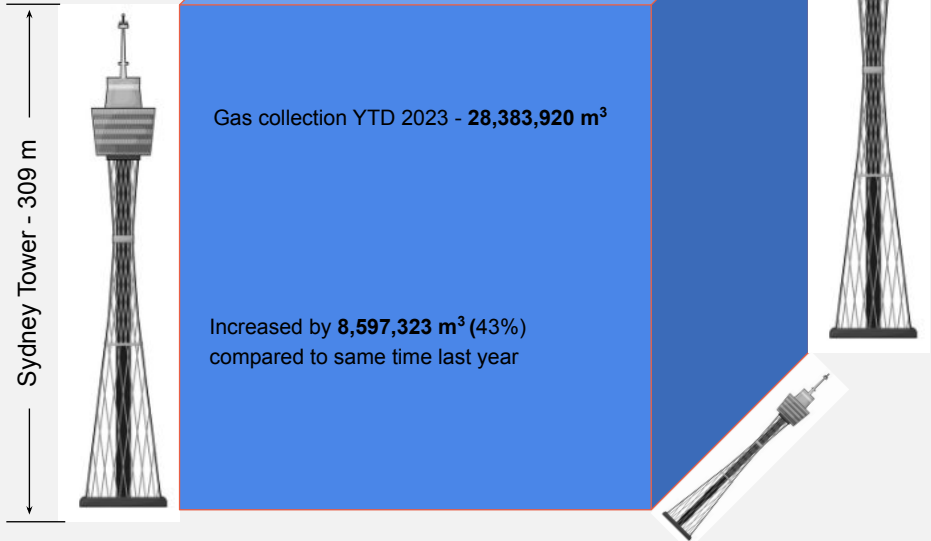
Confirmed that the bioenergy power plant will want to get as much LFG as possible into the engines. Feedback comment is that Veolia should be telling the positive story around gas collection more.

Q. Are we still transporting leachate?

A. No - we stopped in June 2023. Will talk to Mod we are applying for in the Environmental update.

Visual of Gas captured YTD Woodlawn

The volume of gas collected YTD would be contained in a cube the length width and breadth of the Sydney's Centrepoint tower (309m)



Visual of gas captured shown.

Q. Add this sort of graphic to other slides?

A. We will develop that for the next meeting


ECO-PRECINCT OPERATIONAL UPDATE

ODOUR MANAGEMENT

LFG capture has increased from 5,500 m³/h on average to 5,727 m³/h (May to July).

- **Completed**
 - Waste surface redesign better manages stormwater
 - Rock/waste interface - maintaining biofilter and installed drainage trench for better gas collection
 - ED3N Aeration - maintaining aeration of treated leachate
 - MBT Biofilters - refurbishment 2023 (Dec #1 March #2). Humidification system improved to maintain odour neutralizing bacteria more effectively
 - Weather and H₂S monitoring Tarago
 - Monthly surface monitoring - 350 points, 0 exceedance of 500ppm methane trigger on surface of void in July 2023.
 - Historical six key items in previous Odour Audit, five completed, 6th is the Tarago sampling scheduled below
- **To do**
 - Finalise Audit and actions - Finalised
 - Further investigation of impacts of weather conditions - collecting data
 - Independent odour audit - March 2023. Follow up sampling being scheduled for late August including Tarago.
 - Odour data management - feedback on public portal



 Nom de la présentation

Odour management slide.

Q. Surface monitoring - good results. Can we please in future do a slide comparing past years performance with current surface monitoring.

Veolia reiterated the need for the community to report odour to site on the day of the event. This will help us go out and understand the type of odour and the weather conditions in order to trace it back to site. When we receive the EPA notifications it can be 3 to 4 weeks after the event and it is difficult to see what the possible cause was.

Comment made that inversions could be one reason. Veolia agreed but commented that the events are recently not occurring every time there is an inversion so again why it is important to tell us on the day so we can see what is different. MQ said he has smelt the odour 3-4 times this year and he is 15km away.

Comment made that odour is detected at a similar distance, early morning and evening when working outside. It is very specific how the odour travels as while I smell it my neighbor doesn't.

Comment made that it is less intense and shorter in duration than last year.

ACTION: Ray to add notes of what 0 exceedance means for the surface monitoring. Completed.

Q.Can the site share the report conclusion summary following Tarago sampling in August? Is it going to be a one off?

A. We are requesting proposals for a wide range of gas characterization analysis in Tarago and will ask the EPA to comment on any before we pursue them. The end campaign results can be shared.

ECO-PRECINCT OPERATIONAL UPDATE

CONTAINER MANAGEMENT

- **Container Design and Construction**
 - All containers are designed and constructed by qualified and experienced contractors to prevent leakage and odour from containers during transport and handling activities. All containers are water tested prior to distribution.
- **Container Maintenance and Inspection**
 - A container maintenance programme is in place, which is intended to ensure the prevention of emission of offensive odour and leakage of leachate from containers during transport and handling activities.
 - Identified containers are assessed and repaired at both Clyde and Woodlawn.
 - 80 new containers were commissioned in early 2023, replacing older infrastructure.
 - 100 new containers on order for delivery in October 2023 - 19 due in September.
 - Trialing drip tray leak detection.
 - Independent expert assessment of the construction and maintenance of the containers - ongoing.



Still inspecting, monitoring and repairing, and water testing where required.

Q. Have you had a recent penalty on a container?

A. Yes 2, one from last year and one from this year and have until next week to respond. Responding to those is less of an immediate priority than finalizing the maintenance review.

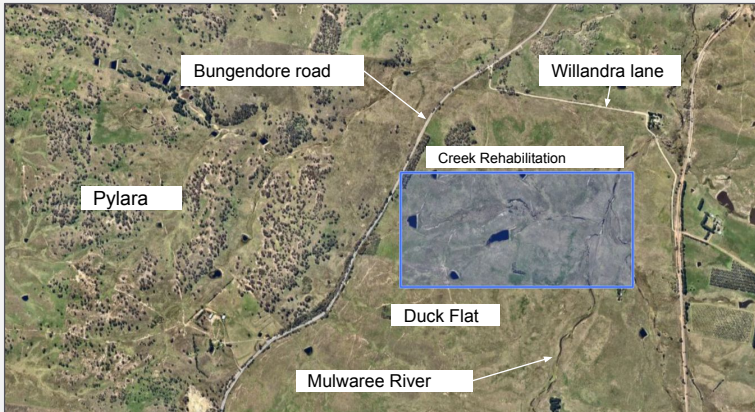
Q. Can we state what the PINs are for?

A. The 2 containers above.

ECO-PRECINCT OPERATIONAL UPDATE

Revegetation initiative - Rivers of Carbon

- **Sydney Catchment rehabilitation project design**
 - Being coordinated with 3rd party revegetation specialists - rivers of Carbon
 - 1,100 tubestock to be planted - phase 1
 - Long term sustainability initiative, improving water quality, river bank ecology and improving ecological functions from the site
 - Tree planting on the 26th August 2023



Feedback statement - that is a good news story to highlight. Suggestion to add pictures of before and after to the Woodlawn page.

Environmental Compliance Update

ENVIRONMENTAL COMPLIANCE UPDATE

GENERAL

- **Site Inspections / Visits / Meetings**
 - Monthly meetings are ongoing
 - Meeting on 08/08/2023 with EPA and DPE on water balance, next steps
- **Tarago Weather and Hydrogen Sulphide (H2S) Stations**
 - Weather and Hydrogen Sulphide (H2S) monitoring stations in the Tarago Village are operational.
 - Landowner access agreements - Veolia access to site and insurance purposes completed
 - Continuous data from the stations has been publicly available in May 2023
 - No measurements of H2S have been confirmed
- **Independent Environmental Audits**
 - Annual Independent Odour Audit completed and awaiting audit report.
 - Annual Leachate & Water Management System Audit completed and submitted to DPE on 26 May 2023, with a revised version submitted on 5 July 2023.
- **Development Control Order**
 - Short to medium and long term strategies have been submitted to the Department for approval.
 - Water balance model ongoing update with EPA and DPE
 - Veolia has already begun implementing these strategies.

Q. When you get updates from regulators can you present them without technical jargon for CLC.

A. We will try to add more visuals to these slides .

ENVIRONMENTAL COMPLIANCE UPDATE

EPL VARIATIONS

Topic	Description	Licence	Status
Leachate Management	<ul style="list-style-type: none"> Adding ED1 Cofferdam #2 to monitoring programme 	EPL 11436	Completed
Administrative	<ul style="list-style-type: none"> Aligning operational hours with Project Approval, and Woodlawn Landfill Disposal of sewerage through an authorised waste services contractor. Amended/removed typographical errors referencing legacy conditions 	EPL 11455	Completed
New additional air quality monitoring	<ul style="list-style-type: none"> Installation of new Meteorology and H2S Monitoring Stations in Tarago, and upgrade of existing site weather station to align with same parameters. 	EPL 11436 PRP U1	Completed
Water and Leachate Management	<ul style="list-style-type: none"> Leachate & Water Management Improvement Plan 	EPL 20476 PRP U1	On Track
Air Quality Management Measure	<ul style="list-style-type: none"> Odour control system improvements by carrying out complete refurbishment of Biofilters 1 and 2. - Odour unit carrying out validation in August. 	EPL 20476 PRP U2	Completed
Leachate Management	<ul style="list-style-type: none"> Approval to receive treated leachate from the MBT and the Woodlawn Landfill for transportation by road to the Spring Farm Facility. 	EPL 11455	Preparing

ENVIRONMENTAL COMPLIANCE UPDATE

PA MODIFICATIONS & POST APPROVAL APPLICATIONS

Approval	Type	Description	Status
MP 10_0012	Post approval	Revised Soil and Water and Leachate Management Plans prepared in consultation with the EPA and Water NSW to include Coffey Dam #2 constructed in the footprint of Evaporation Dam 1. This is a requirement in order to begin discharging into the new Dam.	Approved
MP 10_0012 AWT 06_0239	Modification	<p>Veolia seeks to modify the existing project approval for the Bioreactor and MBT to:</p> <ul style="list-style-type: none"> • Construct an approximately 15 megalitre (ML) dam at the MBTF to hold leachate pumped from the existing approved leachate dam via a pipeline. • Construct an approximately 100 ML dam at the Bioreactor to hold leachate pumped from the existing approved leachate dams via a pipeline. • Transport leachate from the existing and proposed dams to Veolia's Spring Farm Advanced Resource Recovery Facility (ARRF) via road and/or rail. 	Waiting traffic/intersection modelling update - 3 trucks a day during an emergency, but good to have data in any case.

ENVIRONMENTAL COMPLIANCE UPDATE

REGULATORY ENFORCEMENTS

EPL/PA	Date	Facility	Description	Context	Action
EPL 11436	24/10/2022	Woodlawn Bioreactor	Prevention Notice	Dam liner failure in Coffey Dam 1, and the pumping of leachate from Coffey Dam 1 to ED1.	Veolia has engaged experts to assist in rectifying the dam liner, and developed and implemented corrective actions. Due to start Liner work in September.
EPL 11436	03/04/2023	Woodlawn Bioreactor	Official Caution	Failure to publish monitoring data within 14 days of obtaining it.	Veolia has agreed to publish data prior to receiving the Final Report with associated QA/QC documentation and data validation information
EPL 20476	22/03/2023	Woodlawn MBT	Official Caution	Exceedance of 0.5m freeboard limit on Leachate Aeration Pond.	Veolia is in the process of implementing short-terms and long term measures to increase the liquid storage capacity at the Premises
EPL 11436	28/11/2022	Woodlawn Bioreactor	Official Caution	Failure to maintain the run-time log for the mechanical evaporators	An automated continuous logging system is now in place.
EPL 11436	28/11/2022	Woodlawn Bioreactor	Penalty Notice	Offensive odours being emitted from the Woodlawn Landfill.	Veolia is implementing improvements to landfill gas capture, leachate extraction, treatment, storage and evaporation.
EPL 20476	28/11/2022	Woodlawn MBT	Official Caution	Failure for Stormwater Dam to contain all runoff generated at the premises during a 24-hour duration 1-in-100-year ARI rainfall event	Veolia is in the process of implementing short-terms and long term measures to increase the liquid storage capacity at the Premises (updating the water balance)

ENVIRONMENTAL COMPLIANCE UPDATE

REGULATORY ENFORCEMENTS

EPL/PA	Date	Facility	Description	Context	Action
EPL 11436	24/06/2022	Woodlawn Bioreactor	Prevention Notice	Container transport to site - leaking containers, requirement to leak test	Veolia has engaged experts to assist in rectifying the containers including the QAQC management process. Program of leak detection a great initiative to identify containers in need of refurbishment.

Actions from Last Meeting

Actions

Item	Action	Assigned to	Status	Comments
1	Provide links or copies of letters to DPE as attachments to minutes	Veolia	Complete	
2	Change wording of the CLC Charter to note that the Chairperson will facilitate meetings	Veolia	Complete	For Review
3	Advised if there will be a site tour held separately to CLC meetings	Veolia	Complete	For Review
4	Information to be provided via Tarago Times about new containers, drip management	Veolia	Complete	
5	Increase font size in tables for readability.	Veolia	In progress	Check how large
6	Provide a glossary of terms.	Veolia	Not Started	Next Meeting
7	Utilise diagrams for better explanation of the process where possible.	Veolia	In Progress	Review by Committee
8	Present status of actions on IEA audit non-compliances at next meeting	Veolia	One action remaining to simplify/clarify conditions.	Lots of legacy overlap conditions - undertaking review

| Community Q & A

Community Action

List from community group

List from Dr Samantha Johnson

Justin Houghton - Run through

Q. Interest in site visits from the community / open day.

ACTION: Veolia to put it in the next newsletter / Tarago Times. GMC and QPRC could help advertise.

Q. Independent audits provide confidence to the community.

Action: Veolia to summarize non-conformances status from all audits at next CLC.

Feedback comment - remove activities/updates that have been completed.

Feedback comment - update some broken links (EPA link, on community newsletter broken link)

Q. What is the community newsletter for? How is it different from the Tarago Times article?

A. The newsletter is usually a copy of the Tarago Times Article

Let people know tools are there on the Veolia website e.g. advertise that you can submit questions to the CLC

Q. Mulwaree Trust only covers capital projects. There is interest from the community in the Trust covering operating costs for insurance.

A. There is the Tarago discretionary fund from GMC. Henry Gundry attended TADPAI to discuss ways of reducing insurance premiums. It is on Mulwaree Trust agenda but we all need to get the best deal.

FJ - Asked about the H2S study that Veolia said in the Tarago Times, they were going to

do?

JH said we have an independent Health Hygienist did a literature review on potential impacts of low level H2S. We did this to ensure our workers were not at risk. The results showed there is no evidence that low levels of H2S have any detrimental impacts on human health.

FJ - Said that would be good information for the community and would we put it in the Tarago Times?

ACTION: Update community on H2S study in the Tarago Times

ACTION: JH to send written responses to Q&A submitted by the community - with the finalised minutes.

Feedback comment - Share more good news stories.

ACTION: Updates on ARC via mailing list and Tarago Times.

ACTION: Provide links on Tarago Times back to Eco Precinct. Can advertise on Facebook all the positive information.

Feedback comment - acknowledged changes to truck movements during daylight hours.



Next Meeting

The next Community Liaison Meeting will be held at the Woodlawn Eco-Precinct in July 2023, or otherwise agreed.



1 week - send out minutes by COB 18 August. Responses by COB 25 August. Utilise slide pack to document summary meeting notes below slides.

Next meeting - aim to reduce the number of slides, covering only key updates since the last meeting and then use the last 30mins to run through notes beside? slides for agreement.

Meeting closed by Chairperson at 7.36pm.

Woodlawn Eco-Precinct Community Liaison Committee Meeting Minutes

Date	Thursday 10 August 2023	Time	5:00pm to 7.36pm
Coordinator	Justin Houghton, Site Manager, Woodlawn Eco Precinct	Location	Woodlawn Conference Room 619 Collector Road, Tarago

Committee List ✓

Name	Present	Name	Present
Justin Houghton (JH) (Veolia)	✓	Wayne Baynham (WB) (Community Rep)-	X
Cr Andy Wood (AW) (GMC Councillor)	✓	Mark Quinlan (MQ) (Community Rep)	✓
Raymond Choy (RC) (Veolia)	✓	Dr Samantha Johnson (SJ) (Community Rep)	X
Cr John Preston (JP) (QPRC Councillor)	✓	Fiona Jeffery (FJ) (Community Rep)	✓
Kym Wake (KW) (Community Rep)	✓		

Visitors List ✓

Name	Present	Name	Present
Marea Rakete (MR) (Veolia)	X	Carmen Loecherer (CL) (Veolia NSW Manager)	✓
Lee Smith (SMc) (Veolia)	✓	Scott Martin (SM) (GMC Director Planning & Environment)	
Kathryn Whitfield (KLW) (Veolia ARC Project Director)	✓		

Minutes

1	Introduction and welcome
1.1	Looking for a new facilitator. Kym Wake nominated as chairperson.
1.2	Meeting opened with an Acknowledgement of Country and CLC members were welcomed to the CLC meeting.
1.3	JH explained that the current Facilitator had withdrawn from the CLC and that we will be looking for a replacement.
2	ARC project update (see presentation for details)
2.1	<p>Kathryn Whitfield (KLW) from Veolia provided an update on the ARC project.</p> <p>Undertaking additional studies e.g. updating Human Health Risk Assessment, new traffic impact assessment, updating Air Quality Impact Assessment etc</p>
2.2	<p>Current timeline for response to submissions and next steps</p> <p>Timing for a draft response to submissions to be provided to the Department of Planning (DPE) is late Qtr 3 / early Qtr 4 2023. DPE will complete an adequacy review. Following this, the Response to Submissions (RTS) report will become available on the DPE website.</p> <p>DPE then proceeds with preparing its assessment report, and making a recommendation to the Independent Planning Commission (IPC), who is the consent authority for this project. Once the IPC process commences, there will be a further review of the project documentation, DPE's assessment report and recommendations.</p> <p>There will be a process of engagement by the IPC with government agencies and other stakeholders, and importantly, a public hearing at which community stakeholders will be able to register for, and have the opportunity to present to the Commissioners. The IPC will then proceed with making its determination on the project. This is not likely to be in 2023.</p>
2.3	<p>ARC:</p> <p>Q. When is Veolia planning to submit its response to submissions? A. Towards end of Q3</p> <p>Q. Does Veolia consider the bioreactor or the incinerator a more environmentally sustainable solution? Why? A. Energy Recovery Facilities (ERFs) are a proven technology to recover energy from waste and reduce landfill use, fossil fuel use and cut emissions of greenhouse gases. In line with the waste hierarchy where we cannot first avoid, reuse or recycle waste, the next most sustainable way to minimise environmental impact is to recover energy. This technology is also in line with the NSW Waste and Sustainable Materials Strategy.</p>

Q. Is it still the case that transmission line will be considered separately?

A. Yes. (Commentary in room on difficulty of the transmission line and potential effects on community, discussion on mechanisms for a deferred commencement consent. Some believe pressure to approve project on Govt if there is a deferred commencement consent.

Commentary was made that the community believe Veolia could still build and operate the ARC without approval for energy offtake. K LW said that we would not (and could not) operate the ARC without an energy offtake as this is not in line with the NSW EfW Policy.. .) (*Requested note - [Here](#) is the link and section reference to be more explicit. See page 8 Thermal efficiency criteria which explains that facilities must meet the criteria outlined, therefore no facility will ever be allowed to be operational without connection to the electricity grid and meeting the criteria.*

<https://www.epa.nsw.gov.au/-/media/epa/corporate-site/resources/waste/21p2938-energy-from-waste-policy-statement.pdf?la=en&hash=34A8524D2D3869F006A690078594057EBC437214>

Request to add 66kV and 330kV options in RTS. Feedback to include.

Q. What alternative solutions did Veolia consider for waste management before proposing the incinerator? Why did Veolia decide the incinerator was better?

A. In line with Government policy and the waste hierarchy Veolia investigated opportunities for the treatment of residual waste. While new to Australia, ERFs are proven and widely used overseas. Veolia operates facilities at all stages in the waste hierarchy - aiming to first avoid/reduce waste, recycle and then recover waste.

Q. Goulburn Mulwaree Council (GMC) sees very little available further accommodation areas between flood and lead contamination. Potential impacts on price. Council developed a small housing strategy for Tarago - limited footprint for expansion. Lots of State Significant Development (SSD) projects in the region - shortage of accommodation. Short term rental accommodation is difficult to find. Wind farms, solar farms, quarries. Queanbeyan Palerang Regional Council (QPRC) also having same conversations around Queanbeyan, Palerang and Braidwood.

A. An initial housing strategy is being developed that will also include the peak scenarios including 300 workers a day during project construction. Further detail will be developed as part of an accommodation plan prepared prior to construction.

Q. What is the comparison between the proposed incinerator greenhouse gas emissions and the

	<p>bioreactor's current performance?</p> <p>A. An updated assessment based on average emissions is being conducted as part of the Response to Submissions report and will be included in the updated report.</p>
3	Present/Apologies
3.1	<p>Apologies: Wayne Baynham and Dr Samantha Johnson</p> <p>Note: Emma North TADPAI to be invited to next meeting</p>
4	Overview of the CLC charter and agreement on commitments
4.1	<p>Veolia Community Liaison Committee</p> <p>As per slide</p> <p>Update to Quarterly meeting. Paper pre-reading 1 week in advance. When a facilitator is not present then nominate a chairperson.</p> <p>Request Veolia to resource up CLC and community engagement.</p> <p>Comment - CLC is a consultative committee.</p>
5	Site update (provided by JH - see slides for details)
5.1	<p>Q. Can you please add reason/explanation of what tonnages mean i.e. what is the importance of key figures. KW said it would be good to have a reason for each slide as to why it is being reported on and what it means to the community.</p> <p>A. We will put perspective into the next iteration of the slides.</p>
5.2	<p>Water Management slide - Describe current storage status and location.</p>
5.3	<p>Feedback comment Can you please flick past this one unless there are any major changes.</p>
5.4	<p>A. Yes.</p>
5.5	<p>Q. Which coffer dams are in the application process?</p> <p>A. New Dam 3 is onsite next to ED3SS, MBT dam is south of MBT</p>
5.6	<p>Water management freeboard slide -</p> <p>JH - presented the slide and advised of dams that are currently at or above freeboard due to the high rainfall and the plans to reduce these levels.</p> <p>Feedback - Needs more picture, otherwise not particularly interesting / skim past it. JH said the next slide has a graphical representation of the storage volumes. We put everything in this time to see what the committee would like to see going forward</p>
5.7	<p>Q. Are the coffer dams lined?</p>

5.8	<p>A. Both coffer dams are lined.</p> <p>Liquid storage change slide - as per slide. Talked through graphs and impacts of seasons. Leachate management - as per slide. Discussed installing additional evaporators.</p> <p>Q - Is this planning for future water storage needs? A. Yes</p> <p>Q. Who are the approving authorities for new dams? A. DPE, they take EPA feedback. EPA license variation required to use a new dam.</p>
5.9	<p>Q. Bio-energy and Woodlawn MBT Plant slide. Confirm that the bioenergy power plant will want to get as much LFG as possible into the engines. Feedback comment is that Veolia should be telling the positive story around gas collection more.</p> <p>Q - Are we still transporting leachate? A. No - we stopped in June 2023. Will talk to Mod we are applying for in the Environmental update.</p> <p>Visual of gas captured shown. Q. Add this sort of graphic to other slides? A. We will develop that for the next meeting</p> <p>Odour management slide. Q. Surface monitoring - good results. Can we please in future do a slide comparing past years performance with current surface monitoring. Veolia reiterated the need for the community to report odour to site on the day of the event. This will help us go out and understand the type of odour and the weather conditions in order to trace it back to site. When we receive the EPA notifications it can be 3 to 4 weeks after the event and it is difficult to see what the possible cause was. Comment made that inversions could be one reason. Veolia agreed but commented that the events are recently not occurring every time there is an inversion so again why it is important to tell us on the day so we can see what is different. MQ said he has smelt the odour 3-4 times this year and he is 15km away. Comment made that odour is detected at a similar distance, early morning and evening when working outside. It is very specific how the odour travels as while I smell it my neighbor doesn't. Comment made that it is less intense and shorter in duration than last year.</p>

	<p>ACTION: Ray to add notes of what 0 exceedance means for the surface monitoring. Completed.</p> <p>Q.Can the site share the report conclusion summary following Tarago sampling in August? Is it going to be a one off?</p> <p>A. We are requesting proposals for a wide range of gas characterization analysis in Tarago and will ask the EPA to comment on any before we pursue them. The end campaign results can be shared.</p> <p>Container management slide.</p> <p>Still inspecting, monitoring and repairing, and water testing where required.</p> <p>Q. Have you had a recent penalty on a container? A. Yes 2, one from last year and one from this year and have until next week to respond. Responding to those is less of an immediate priority than finalizing the maintenance review. <i>Editorial note - as requested, the amount totals \$30,000.</i></p> <p>Q. Can we state what the PINs are for?</p> <p>A. the 2 containers above.</p> <p>Revegetation Initiative slide.</p> <p>Feedback Statement - Veolia, that is a good news story to highlight. Suggestion to add pictures of before and after to the Woodlawn page.</p>
6	Environmental update (provided by RC - see slides for details)
6.1	Environmental Compliance Update - slide
	Q. When you get updates from regulators can you present them without technical jargon for CLC.
6.2	A. We will try to add more visuals to these slides .
6.3	
	<i>Editorial note requested - It is Veolia's intention that, if approved, we only transfer leachate from the MBT to the Spring Farm facility during emergency periods.</i>
	EPL variations - as per slide.
	Regulatory enforcement - as per slides.
7	Actions
	As per slide.
8	Community Q&A
8.1	Q. Interest in site visits from the community / open day.
	ACTION: Veolia to put it in the next newsletter / Tarago Times. GMC and QPRC could help advertise.

	<p>Q. Independent audits provide confidence to the community. Action: Veolia to summarize non-conformances status from all audits at next CLC.</p> <p>Feedback comment - remove things that have been completed. Feedback comment - some broken links (EPA link, on community newsletter broken link)</p> <p>Q. What is the community newsletter for? How is it different from the Tarago Times article? A. The newsletter is usually a copy of the Tarago Times Article</p> <p>Let people know tools are there on the Veolia website e.g. advertise that you can submit questions to the CLC</p> <p>Q. Mulwaree Trust only covers capital projects. There is interest from the community in the Trust covering operating costs for insurance. A. There is the Tarago discretionary fund from GMC. Henry Gundry attended TADPAI to discuss ways of reducing insurance premiums. It is on Mulwaree Trust agenda but we all need to get the best deal.</p> <p>FJ - Asked about the H2S study that Veolia said in the Tarago Times, they were going to do? JH said we have an independent Health Hygienist did a literature review on potential impacts of low level H2S. We did this to ensure our workers were not at risk. The results showed there is no evidence that low levels of H2S have any detrimental impacts on human health. FJ - Said that would be good information for the community and would we put it in the Tarago Times? ACTION: Update community on H2S study in the Tarago Times</p> <p>ACTION: JH to send written responses to Q&A submitted by the community - with the finalised minutes.</p> <p>Feedback comment - Share more good news stories. ACTION: Updates on ARC via mailing list and Tarago Times. ACTION: Provide links on Tarago Times back to Eco Precinct. Can advertise on Facebook all the positive information.</p> <p>Feedback comment - acknowledged changes to truck movements during daylight hours.</p>
<p>9</p>	<p>Meeting Close</p>
<p>9.1</p>	<p>1 week - send out minutes by COB 18 August. Responses by COB 25 August. Utilise slide pack to document summary meeting notes below slides. Next meeting - aim to reduce the number of slides, covering only key updates since the last meeting and then use the last 30mins to run through notes beside? slides for agreement. Meeting closed by Chairperson at 7.36pm.</p>

Action List

Item	Action	Assigned to
1	ACTION: Include summary status of pending Independent Environmental Audit actions in next CLC	Veolia
2	ACTION: Move 'Present / Apologies' section up to before ARC update. Move 'Actions' recap up front.	Veolia
3	ACTION: CLC to agree on how to do minutes. Use a presentation format with notes. Here are minutes for that slide. Veolia to send out presentation with minutes in each slide	Veolia
4	ACTION: Send agenda and presentation Thursday prior to meeting (1 week before).	Veolia
5	ACTION: Update charter as per minutes.	Veolia
6	ACTION: Add reason of what each slide means and what is relevant to the community (for site update tonnages). Ask so what?	Veolia
7	ACTION: Feedback - could flick past water management slide unless any changes - just show volume graphs	Veolia
8	ACTION: Better communicate the positive stories around gas collection, emissions reductions etc. Don't just talk to these exclusively at the CLC.	Veolia
9	ACTION: Repair broken links on Veolia website	Veolia
10	ACTION: Veolia to inform the community of how to organise site tours - Also look into an open day later in the year.	Veolia
11	ACTION: Update community on H2S study in the Tarago Times	Veolia

Odour:

1. Over the last few months there have been large numbers of odour complaints, however the H2S sensors installed by Veolia have detected almost no H2S (even though Veolia states the sensors are more sensitive than the human nose). Given virtually no H2S has been detected, what are the constituent components of the odour being detected, and what impact do these odours have on humans (including young children)?

Veolia has established an ambient air quality monitoring surveillance system designed to provide real-time feedback on the presence of hydrogen sulphide (H2S). The H2S sensors have been operating since March and the data is publically available.

According to Safe Work NSW - Hydrogen sulphide (H2S) is mainly considered a high risk when it is produced and concentrates in confined spaces and poorly ventilated or enclosed areas such as pits, tanks, vessels, sewer lines, manure pits and manholes.

H2S has not been found in Tarago at a parts per billion concentration in recent months, and the relevant guidelines for H2S exposure in air are in the units of parts per million (a thousand times higher). A third party odour specialist is providing a proposal to Veolia for the sampling of other potential odourous gases in Tarago. This proposal will include a broad suite of gases, and will compare concentrations against known published guideline criteria.

2. Is the release of odours other than H2S a breach of Veolia's EPL?

Odour is subjective and one consideration for a breach is whether an odour is proved to be offensive - this can be different for different people. There are objective relative odour unit scores that are sampled and modelled for sources on-site in our annual independent audits.

3. Odour sensors - are they working? Even on the days when the tip is stinking there is nothing recorded. Are the odour sensors in the right place?

We don't have odour sensors, we have H2S sensors - H2S at very low concentrations may not even have an odour. These are in place to see if there can be any correlation made between H2S levels at site and in town. The landfill gas produced at Woodlawn does have H2S at very low levels (0.1% average).

Veolia acknowledges that just because there is no H2S being detected does not mean that there is no odour. We are currently investigating other sampling opportunities to see if there is any other relevant gases that can be monitored to help us pinpoint and better manage odour.

4. What are we breathing in if the odour sensors aren't recording anything? What testing has been done to establish the gases being released and the impact on residents?

While smelling odour can be concerning it is not a representation of gas or chemical concentrations. The issue we have is that the concentrations of elements that make up the odour are so low there are no readily available field instruments to measure them.

We monitor the workplace and our staff, who are the closest receptors of any potential impacts from gas produced on site from an OH&S perspective. This monitoring occurs within

the landfill area in order to ensure our workers are safe and potential risks are managed.

Additional sampling of other potential odourous gases within the bioreactor is planned for September. This work will be carried out by third party specialists, with the scope and data collection being undertaken in consultation with EPA.

5. Does Veolia undertake active testing of the H₂S sensors (such as releasing H₂S odour next to the sensor) in order to confirm the sensors are working? If so, when was this test last conducted? If not, how does Veolia know the sensors are working?

The sensors are calibrated by a third party independent specialist. We have discussed conducting further testing of the sensors with the manufacturer and are investigating with the specialist and manufacturer what type of test would be best suited. It is important to note that because the sensor is so sensitive we need to make sure we don't damage it when we test.

6. Veolia has highlighted the new sensors detect other sources of H₂S? How many other sources of H₂S have been identified by Veolia's investigations?

H₂S is a naturally occurring gas and can also be produced by other sources such as burning fuel, vehicles, septic tanks, feedlots or other degrading or rotting organic materials.

There have been no specific investigations carried out by Veolia locally into other sources of H₂S. The statement made in the Tarago Times that there may be other sources of H₂S locally was to make sure people understood that H₂S readings at the H₂S sensors may not always be from Woodlawn in every instance. Again this is not suggesting this means there is no odour from Woodlawn.

7. Veolia investigates odours that are 'allegedly' coming from Woodlawn. Has Veolia identified any other sources of odour? If so, has Veolia reported these other sources of odour to the EPA?

Veolia undertakes an Independent Odour Audit every year. This audit measures odour potential and also samples potentially odourous sources on site in order to see if there has been any improvement or if there are any suggestions to address or prevent potential odour sources on site.

As we are not receiving notification of odour from the community on the day of the incident it is difficult to investigate actual odour incidents and their potential causes. We receive complaints from the EPA sometimes 3 to 4 weeks after the incident, so when carrying out investigations we use the term "allegedly".

We need people to report to us on the day so we can investigate and track the odour. This will help us understand the severity, intensity and type of odour in real time to help us determine where the odour is coming from and what can be done to rectify.

CLC:

1. Why did the last CLC meeting minutes take about 7-8 weeks to release (particularly when the meeting minutes clearly indicate the aim to release the minutes within two weeks)?

It took a long time to get consensus on the minutes. The facilitator made the comment that he

believed that these were not minutes but more of a transcript which is very detailed on every word that is spoken and that normal meetings he facilitates should not go into this detail. We hope to address this at the next meeting.

Water:

1. Veolia has previously breached the freeboard limits in many of the dams. Could Veolia please provide an update at every CLC of the current levels in the dam including how close the current levels are to the freeboard limits, and how these levels have changed (graphed over the last six months)? Numbers on powerpoint slides are not easy to interpret -- a graph over time provides more transparency.

Yes we can - we have a lot of dams and they all have different volumes so there may be several graphs to go through but we can work on this.

Gas Capture/Energy Production:

1. Veolia's September 2022 newsletter contained a graph of gas capture (total, to the engines and to flares). Could Veolia please provide an update of this graph every CLC meeting (rather than just numbers)? Could Veolia please include the output in kWh/MWh on the same graph? The community would like to see how much electricity is being generated and how much gas is going to the flares.

Added to Presentation

2. How many Engines does Veolia currently have installed for burning the gas? Has there been any increase to the number of engines in the last 12 months? Are there any plans to increase this number? If so, when can we look forward to seeing larger output from the Bioreactor?

Veolia currently has 7 landfill gas engines installed. We also have 3 flares that flare any gas that is produced by the bioreactor excess to the engine requirements. We have the ability to extract the same amount of gas by operating 3 flares if the engines are down for maintenance, but only need to use one at the moment to handle a small amount of surplus gas.

Road/Rail Transport:

1. According to the June CLC meeting minutes, Veolia's presentation states the proposed modification to MP10_0012 (page 34, "PA Modifications" and page 36 "Consultation Items") included transport of leachate by road and/or rail. Veolia's submission to the Department clearly states the transport to the Spring Farm ARRF would be by road and makes no mention of transport by rail. Can Veolia please clarify: Will the proposal include the transport of leachate by rail or not?

Transport of any leachate would only be in an emergency situation and limited to 3 trucks a day. In an emergency, road transport would be the quickest solution to transport leachate as rail would be a slower and more complex process. Veolia withdrew the rail option from the modification as it was bringing complexities to the approval process. The modification submission has been updated to only cover the transport of leachate by road, confirming the proposal will not include the transport of leachate by rail.

2. Who owns the trucks transporting waste to Woodlawn?

Local waste transport trucks are owned by the relevant customer coming to site, except for one that collects from Palerang and Upper Lachlan council. Waste transported to site from Crisps Creek is transported by a local transport company based in Goulburn. Some of the smaller local collection trucks, including the Tarago collections, that come straight to site, are operated by Veolia.

3. Is the transport of waste managed entirely by Veolia? Is transport contracted to other companies? (What is the breakdown of Veolia-owned vs other-owned?)

See response above.

4. Who owns the containers that waste is transported in?

Veolia owns the containers for the waste that passes through the Crisps Creek Intermodal Facility by rail. Local waste containers are owned by customers.

5. Residents have witnessed waste leaking from containers during road transport after the EPA issued the new requirements for container transport. Why?

Veolia has a robust inspection and maintenance process in place for our containers. As part of this process every container seal is cleaned, any debris is removed from around the seal area, doors seals are inspected, doors close mechanism checked. The containers are visually inspected before leaving Crisps Creek and again when the containers arrive at Woodlawn - any faults are reported.

All faulty or damaged containers or seals that are reported are removed from service, repaired and water tested prior to going back into service. Veolia transports around 30,000 containers a year and we aim to prevent any leaks. We have replaced 80 containers with new ones early in 2023 and are in the process of receiving a further 100 new containers to replace any older containers that need to be decommissioned.

6. Is Veolia now only using the newer containers to transport waste? Does Veolia still use older containers for road transport?

Veolia currently uses both new and reconditioned containers. Veolia has removed all containers that do not meet the requirements of the performance based testing criteria (which includes water leak tests). Our replacement criteria is the same as the performance based criteria above. If a container cannot be repaired to pass the performance based testing, it is put out of service and replaced.

7. Thank you for asking waste contractor trucks to stay off Bungendore road before 7am. Are there any other trucks heading to Woodlawn before 7am (e.g. trucks bringing dirt etc.)?

There are not any other trucks heading to Woodlawn along Bungendore road between Bungendore and Woodlawn before 7am. We have reconfirmed that any other engineering material transport is not undertaking movements before 7am.

8. How many waste contractor trucks bring waste by road each day? How many arrive at 7:30am to tip waste?

Local waste starts arriving at 7.30am and there are approximately 20 to 30 trucks of local waste per day. Please note that as the days get longer trucks will return to 7.00am delivery.

There are 10 trucks transporting waste from Crisps Creek to Woodlawn - between 90 and 110 containers a day (1 container per truck movement).

10. Can Veolia make adjustments to their transport schedule to help avoid trucks passing through the centre of Tarago during school bus pick-up and drop-off times?

Veolia can certainly look at our transport schedules in relation to trucks passing through Tarago and in particular past the school during drop off and pick up. There are only a limited number of trucks coming to site that travel through Tarago, approximately 10% of our local waste travels through Tarago. Because most of these are smaller collection trucks this averages approximately 8 trucks per day. This may vary and we can get as many as 10 and as few as 1 per day.

An analysis of our truck times shows that of these 8 on average 4 pass through Tarago during school pick up and drop off. However, this can be as high as 6 and as low as 1 during this time. We will investigate further to see if we can keep this number as low as possible during the hours of concern.

Our truck drivers and contractors are all aware of and adhere to our Transport Code of Conduct which outlines approved roads, local bus timetables and to follow all road rules.

Documentation:

1. Request for a copy of the Development Control Order issued to Veolia on 1 April 2022.

The Development Control Order is held by the Department of Environment and Planning and is not a publically available document. Veolia provides in-depth updates on long term strategies being developed at Woodlawn as well as operational status of dams in detail at each CLC.

2. Request for a copy of the odour complaints register in csv format.

The complaints register is available online at the link below under the Woodlawn Complaints Register tab

<https://www.veolia.com/anz/our-facilities/treatment-plants/solid-waste/woodlawn-eco-precinct>

ARC:

1. When is Veolia planning to submit its response to submissions?

We are estimating to submit our response to submissions towards the end Q3/early Q4 2023 to the Department of Planning and Environment.

2. Does Veolia consider the bioreactor or the incinerator a more environmentally sustainable solution? Why?

Energy recovery facilities (ERFs) such as the proposed Woodlawn ARC are a proven technology to recover energy from waste and reduce landfill use, fossil fuel use and cut emissions of greenhouse gases. In line with the waste hierarchy where we cannot first avoid, reuse or recycle waste, the next most sustainable way to minimise environmental impact is to recover energy.

3. What alternative solutions did Veolia consider for waste management before proposing the incinerator? Why did Veolia decide the incinerator was better?

In line with Government policy and the waste hierarchy Veolia investigated opportunities for the treatment of residual waste. While new to Australia, ERFs are proven and widely used overseas. Veolia operates facilities at all stages in the waste hierarchy - aiming to first avoid/reduce waste, recycle and then recover waste.

4. What is the comparison between the proposed incinerator greenhouse gas emissions and the bioreactor's current performance?

An updated assessment based on average emissions is being conducted as part of the response to submissions report and will be included in the updated report.